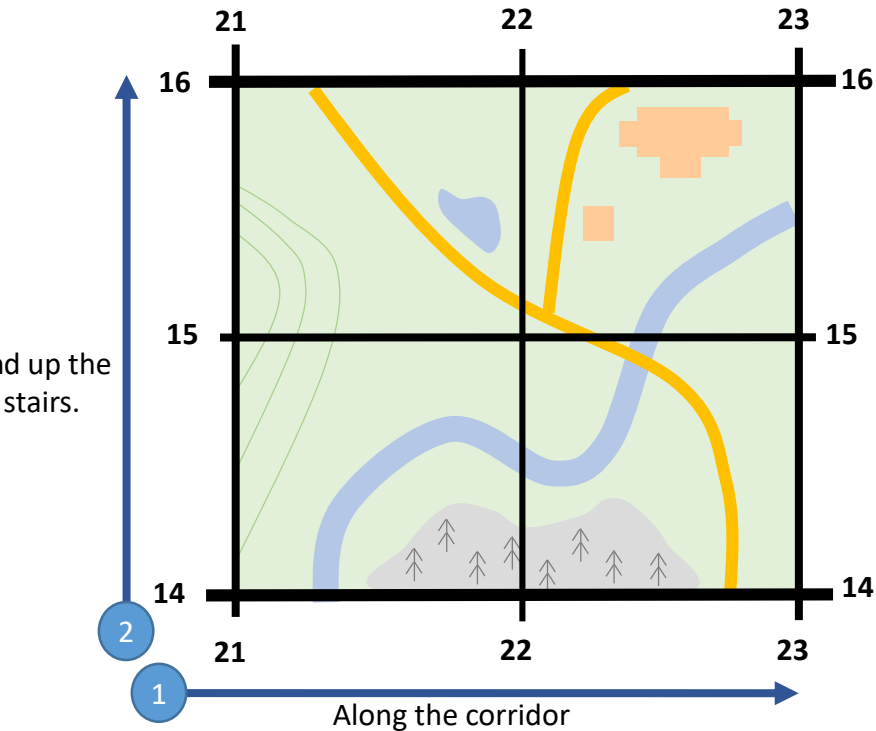
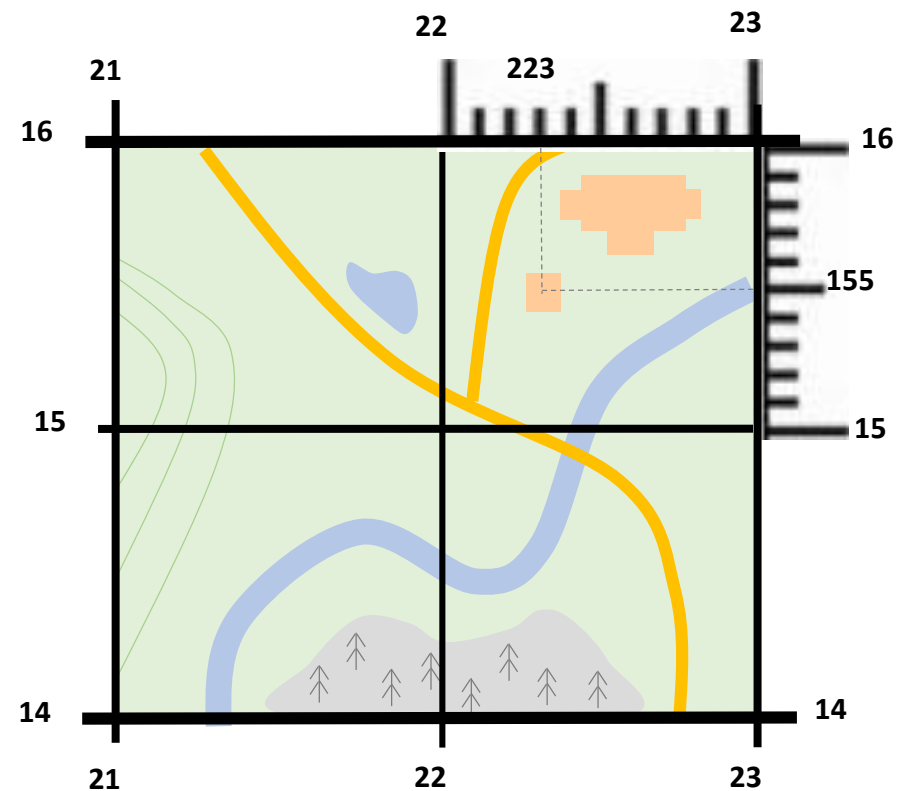




GRID REFERENCES



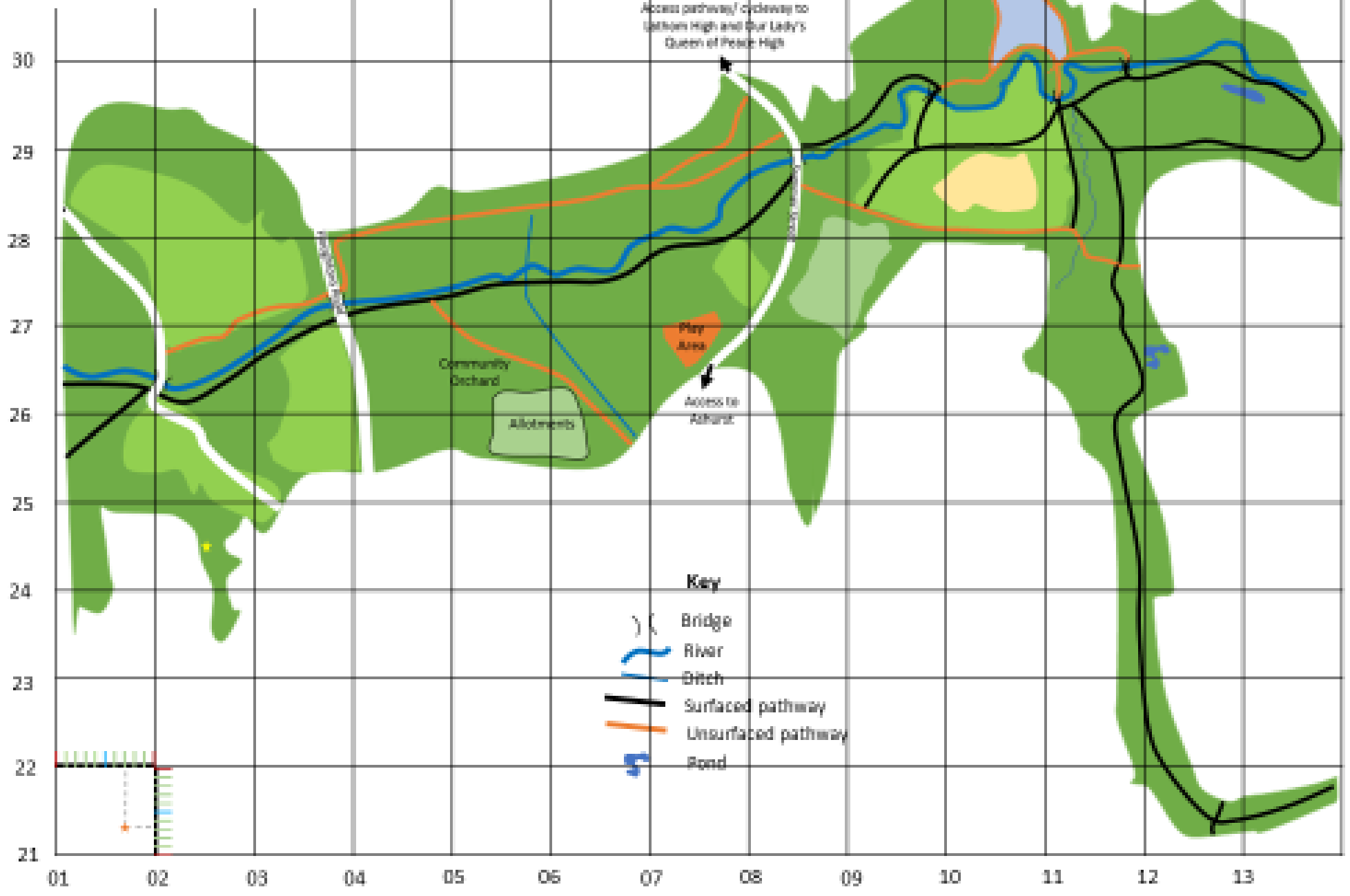
Grid References can be represented as four or six figures. When reading grid references take the first reading from the bottom axis (along the corridor) followed by the reading from the vertical axis (and up the stairs). So the buildings on the diagrams are located in grid reference box 22 15. The chosen box is always the one after the grid number.



Six figure grid references are useful to get a more specific location. To take a six figure grid reference, imagine the box is split into ten both on the horizontal and vertical axis- see the diagram opposite. The six figure grid reference for the smaller building is 223 155.

Now use the map of Tawd Valley Park to find the grid references for the points on the map.

Tawd Valley Park





GRID REFERENCES

Using the map of Tawd Valley Park can you work out the following?

1. Provide a 4 figure grid reference for the play area.

2. What will you find if you go to grid reference 05 25?

3. Where will you find the Community Orchard?

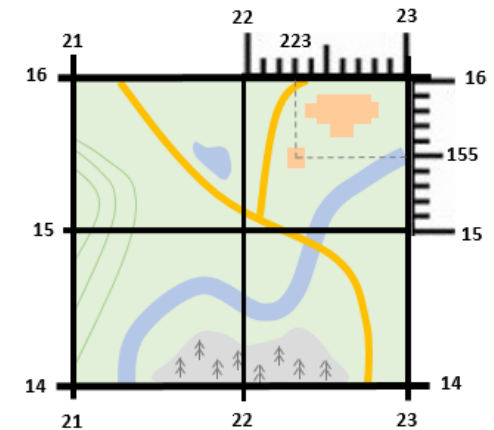
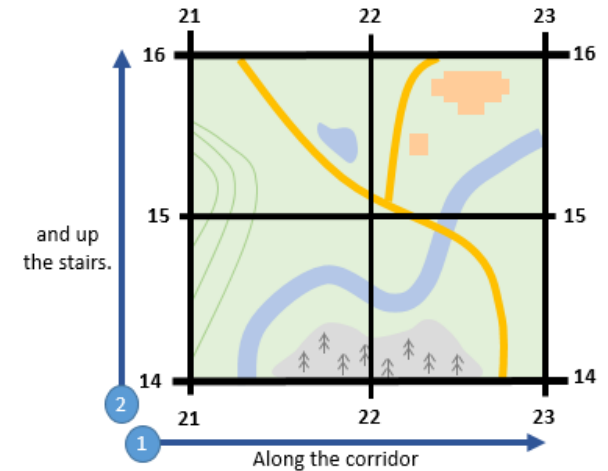
4. If you wanted to find the river at Houghton's Road what grid reference would you go to?

Now try 6 Figure Grid References

5. What will you find at grid reference 121 267?

6. What is the 6 figure grid reference for the pathway going to Ashurst?

Now go to visit Tawd Valley Park and see if you can find the grid references using the map.





GRID REFERENCES

Using the map of Tawd Valley Park can you work out the following?

1. Provide a 4 figure grid reference for the play area.

07 26

2. What will you find if you go to grid reference 05 25?

The allotments

3. Where will you find the Community Orchard?

05 26

4. If you wanted to find the river at Houghton's Road what grid reference would you go to?

03 27

Now try 6 Figure Grid References

5. What will you find at grid reference 121 267?

A pond

6. What is the 6 figure grid reference for the pathway going to Ashurst?

075 265

Now go to visit Tawd Valley Park and see if you can find the grid references using the map.

